

## The Camp Arrangement

Moses and Aaron (and his sons) pitched their tents facing the entrance of the Tabernacle (on the east side).

Levites surrounded the Tabernacle on all sides.

All sides had three tribes ( $3 \times 4 = 12$ ).

The tribe of Judah camped on the east side, by the only entrance (which represented Christ). Christ is from the line of Judah, who received his father Jacob's blessing.

Joseph (through Ephraim and Mannaseh) and Benjamin are on a side together.

The tribal banners also picture Christ (*Ezekiel 1:10; Revelation 4:7*). He is the Lion of Judah, the Son of Man, the True Servant, and the Most High.

The objects of the Tabernacle formed an inner cross in the camp.

The camp arrangement formed an outer cross in the desert (note similar counts on the north/south sides, less men on west side (top), and most men on east side (bottom), like a cross).

Note where the blood and water of Jesus' side would have been in the cross (at the altar and laver).

## The Traveling Procession

1st to March  
Judah, Issachar, and Zebulun

2nd to March (carrying Tabernacle)  
Gershonites and Merarites

3rd to March  
Reuben, Simeon, and Gad

4th to March (carrying the sacred objects)  
Kohathites

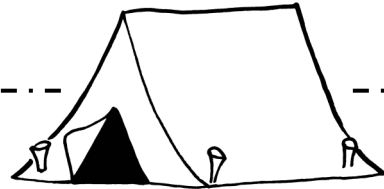
5th to March  
Ephraim, Mannaseh, and Benjamin

6th to March  
Dan, Asher, Naphtali

Note that Judah was the first to travel (family leadership), while Reuben, Simeon, and Levi were second and third to travel.



# The Camp of Israel Continued...



**West Side Total**  
108, 100 Men

**Under the Banner of an Ox**  
(Christ's Sacrifice)

He is the True Servant!  
*Mark 10:45*

Benjamin = 35,400

Manasseh = 32,200

Ephraim = 40,500

**Under the Banner of an Eagle**  
(Christ's Deity)

He is the Most High!  
*Luke 1:32*

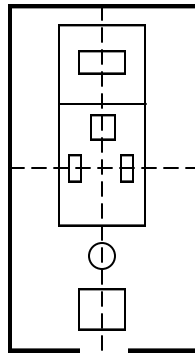
**South Side Total**  
151,650 Men

Gad = 45,650

Simeon = 59,300

Reuben = 46,500

Gershonites



Moses, Aaron, & Sons

Dan = 62,700

Asher = 41,500

Naphtali = 53,400

**North Side Total**  
157,600 Men

**Under the Banner of a Man**  
(Christ's Humanity)

He is the Son of Man!  
*John 3:14*

Judah = 74,600

Issachar = 54,400

Zebulun = 57,400

**Under the Banner of a Lion**  
(Christ's Lordship)

He is the Lion of Judah!  
*Matt. 2:6*

**East Side Total**  
186, 400 Men

